

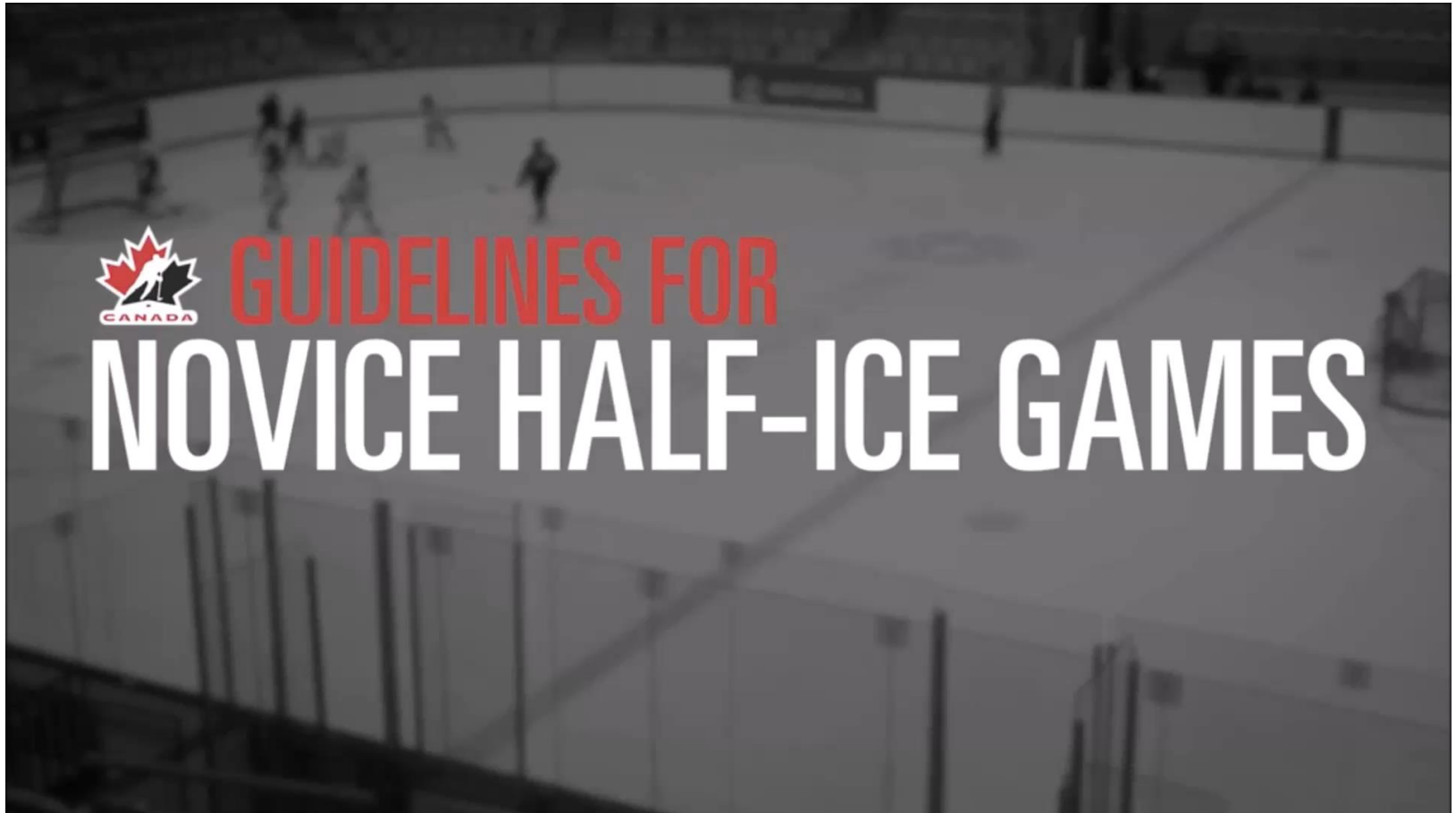


2018 Novice Hockey

"Officiating Module"



Game Play Video



Please click image above to play

Welcome to the Officiating Team

- At this level a one (1) official system will be employed.
- The system provides officials with an opportunity to experience several aspects of officiating
- This is a valuable opportunity to put on a uniform, get on the ice in live action and learn basic aspects of being an official in a less formal and positive atmosphere.



Role of the Official

During a Novice game the official will:

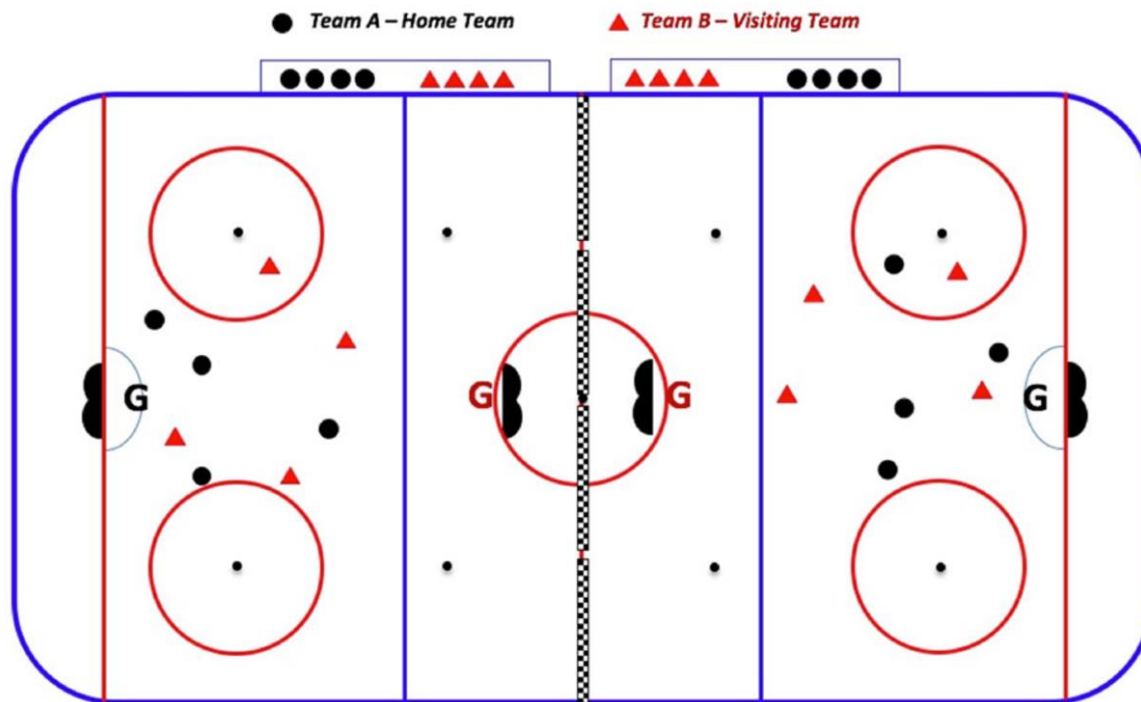
- ❖ Communicate with the coaches
- ❖ Communicate with the players
- ❖ Skate 'in traffic' with players
- ❖ Watch and follow the play
- ❖ Stop play when the puck is frozen or shot out of play
- ❖ Call penalties
- ❖ Signal goals
- ❖ Perform functional and foundational positioning
- ❖ Drop Pucks (face-offs)

General Format

- 4 on 4 format – plus each team with a goaltender Each team is required to have two (2) goaltenders, one for each half of the ice
- 60 Minute games
 - Three (3) -minute warm-up (clock is applicable to both games)
 - Two 25-minute halves (2 periods) running time Shift length – one (1) minute in duration with an automatic buzzer or whistle sounding to indicate players change.
- There are **no icing** or **off-sides**
- No score is kept, and no game sheets are necessary.
- Player shifts are recommended to be one (1) minute in length.
- A buzzer or whistle will sound to signal line changes.
- Should the buzzer/whistle sounds, players must leave the puck immediately and vacate the ice.
- The new players enter the ice immediately and play resumes where the puck was last located.

The Game Setup

- The home team shall defend the ends of the rink, while the visiting team shall defend the centre-ice nets
- Rink set-up: One set of barriers or two sets of barriers with a space in between for spare players



Face-offs & Game Situations

1. Start of Game / period
2. Goaltender freezes the puck
3. Player falls on or freezes the puck
4. Puck shot out of play
5. A goal is scored

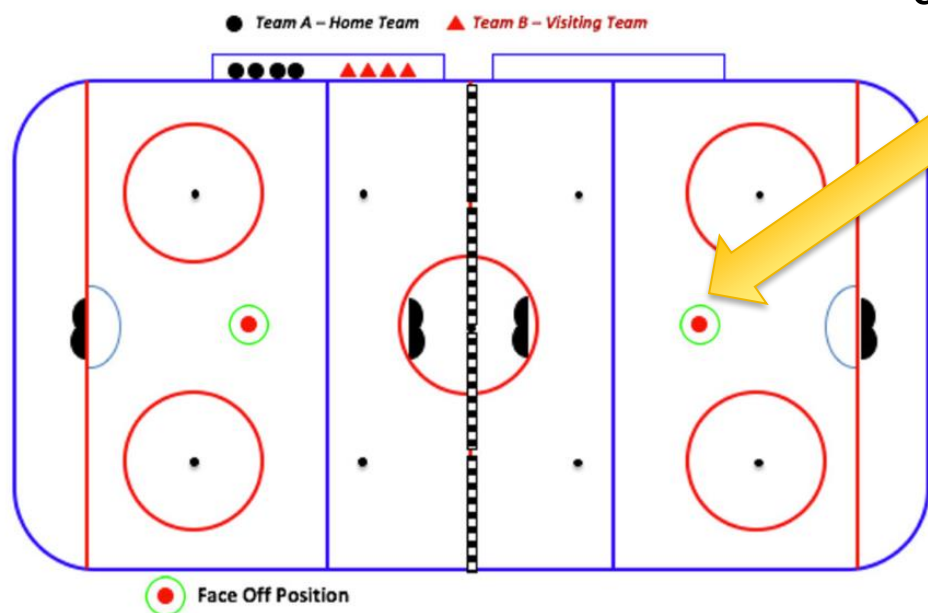
* Officials will be encouraged to carry an extra puck in their pocket

Format #1:

The official blows the whistle to indicate the attacking team must back off and the defending team gets possession of the puck.

Format #2:

The official blows the whistle and conducts a face-off.



- There will be one (1) face-off location.
- This will be located about halfway between the goals.
- Coaches and arena staff may mark the centre face-off location with a temporary marking for game play purposes.

Penalties

1. The official will signal a delayed penalty and conduct the penalty procedure when the offending team gains possession and control of the puck.
2. Penalties will be followed by a change of possession by giving the non-offending team the puck and having the offending team back away from the puck [three (3) meter cushion].
3. At the conclusion of the shift the official can clarify the infraction with the coach including the number of the offending player.
4. The offending player will sit out the next shift under the coach's direction.
5. At no time will any team play short-handed due to a penalty infraction.
6. Should an infraction occur that would normally require a player to be ejected from the game (game misconduct, match penalty or gross misconduct), the player will be removed from the remainder of that game. Even under these circumstances, teams will not play shorthanded and no game incident report will be required.

Officiating Positioning

- Foundational positioning principles will be used.
- Under the half-ice structure, approximate positioning should be used to get officials comfortable with their proximity to the goal. (The concept of the 'cone' should be reserved for when full-ice play begins.)
- Officials are encouraged to move towards the net on goal situations and away from the play towards the boards as play comes towards them, allowing players to pass by; the official can then follow up the ice at a safe distance.

